

Topics covered by this presentation

- Introduction to the main applications for stationary batteries for wineries and discuss their benefits.
- Discuss the difference between peak shaving and load shifting.
- Show that peak shaving has the largest benefit.



About The Solar Project

- SA Owned leader in energy services provider and contractor specialising in Commercial Solar Power Projects
- Key Activities
 - Energy productivity planning & implementation
 - Integrate renewable energy & complimentary technologies
- Established in 2011 by Owners & Directors David Buetefuer and Theodore Strecker – 34 combined years continuous industry experience



About The Solar Project

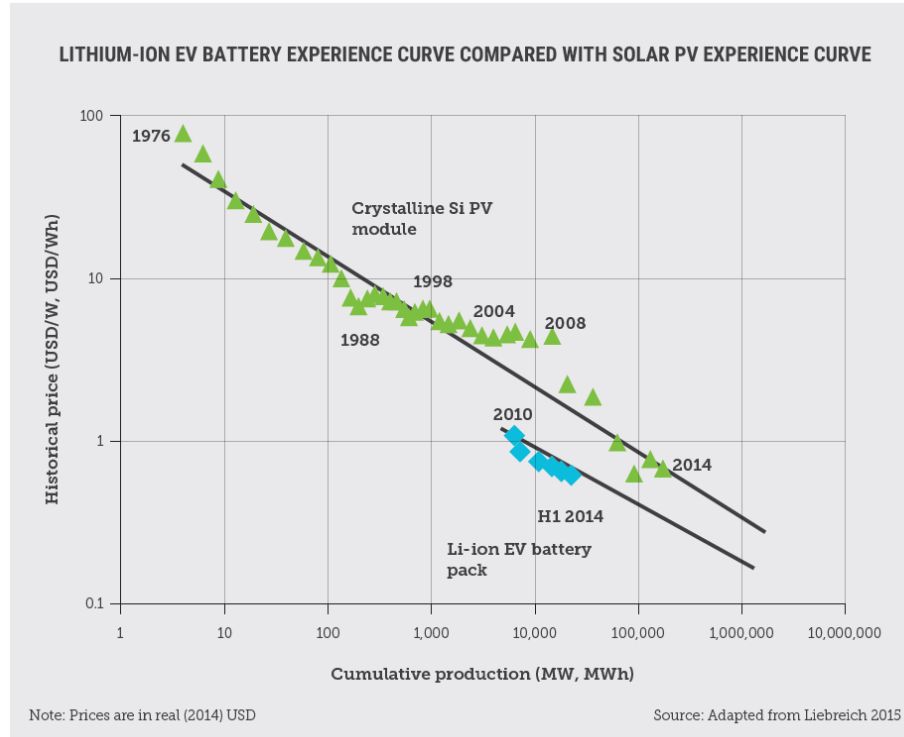
The Solar Project Mission: To free South Australian businesses from the grid through enabling them to take control of their energy productivity.

- Founding Partner of Carbon Neutral Adelaide



Founding Partner
**CARBON
NEUTRAL
ADELAIDE**

Why are batteries in the news?



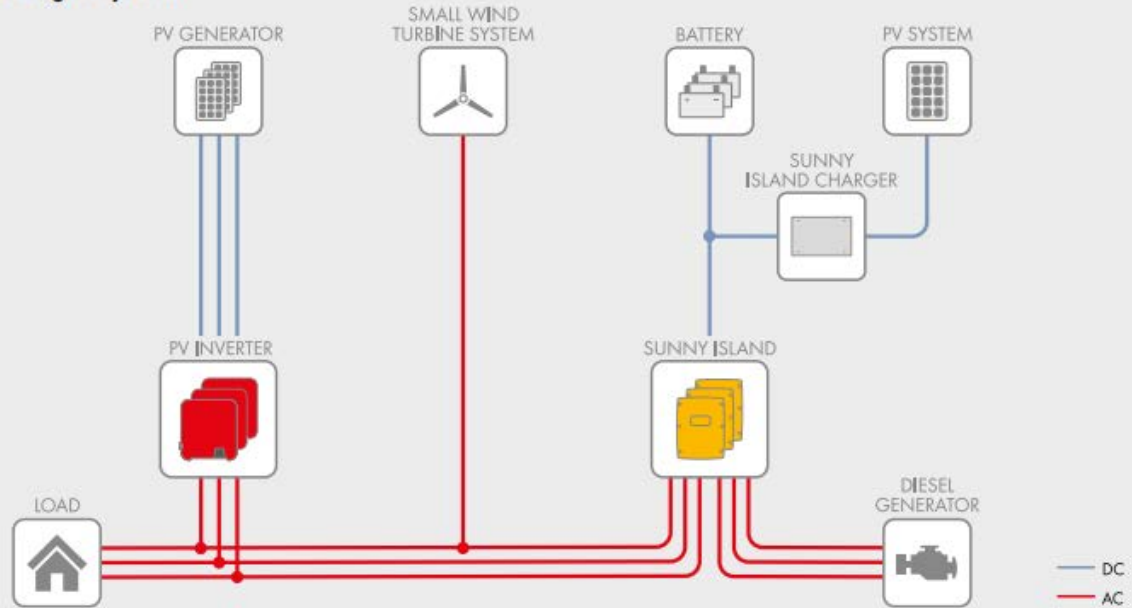
On-Site Battery Energy Storage System (BESS) applications

1. Off-grid
2. Back-up
3. UPS
4. Load shifting / Storage of renewable energy
5. Peak shaving / Securing demand reduction
6. Deferring infrastructure augmentation
7. Other storage applications



1. Battery use in off-grid power supply

Three-phase off-grid system



2. Back-up power supply

Improve Supply Security/Blackout protection:



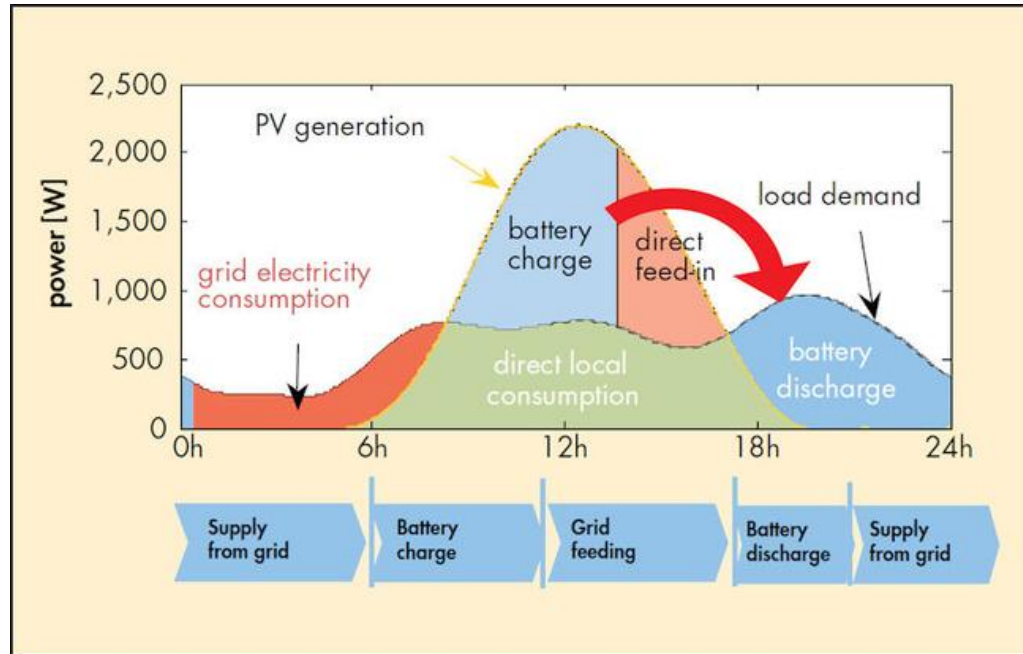
3. Uninterrupted power supply (UPS)

Blackout protection for essential services:



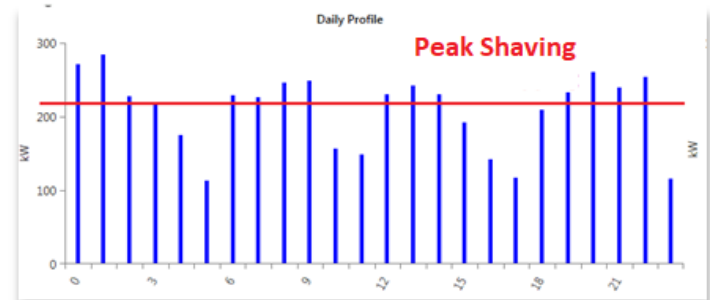
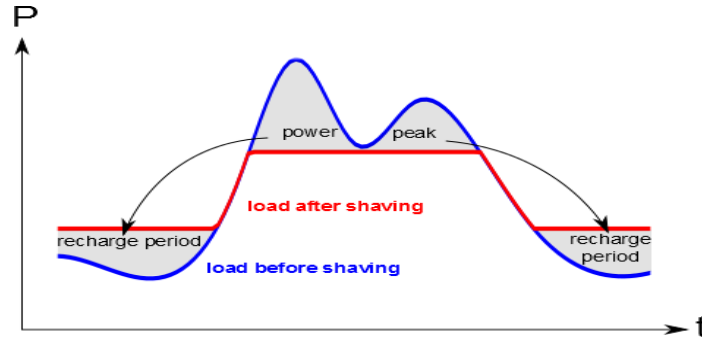
4. Load shifting

Increase self consumption of renewable energy



5. Peak lopping

Securing reduction in demand charges



6. Deferring infrastructure augmentation

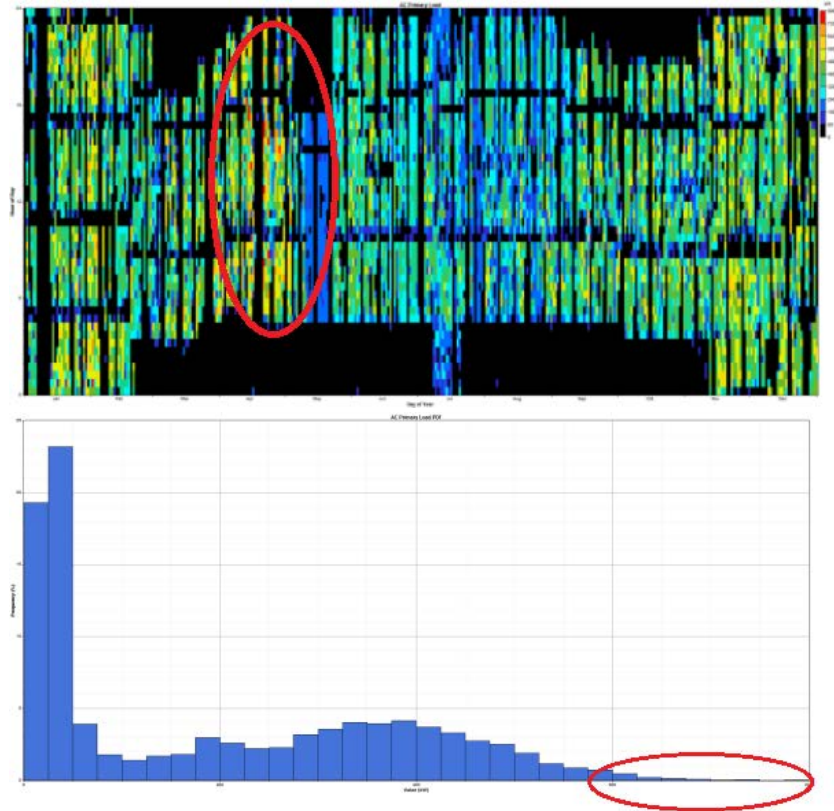


7. Other storage applications

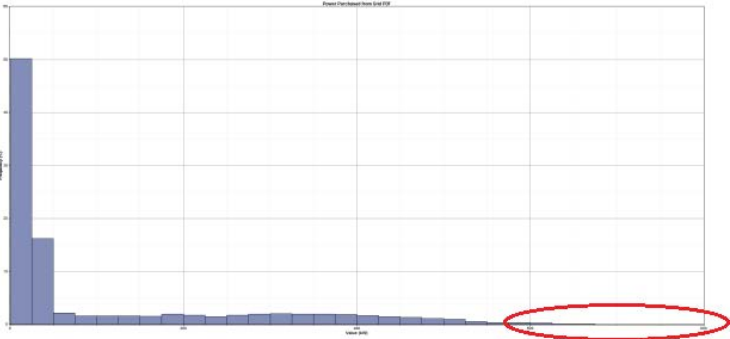
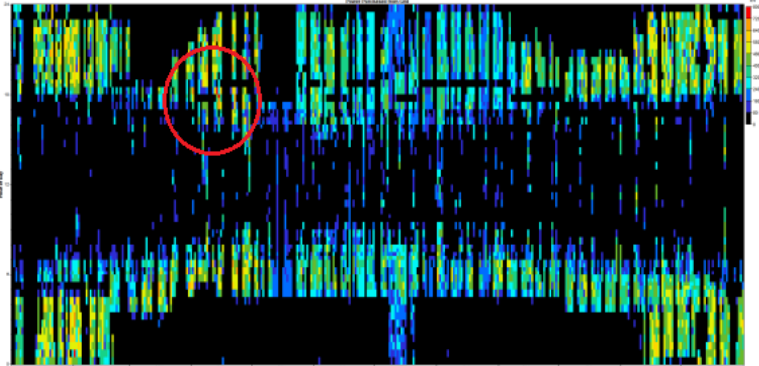
Thermal Energy Storage Systems



Case study 1: Battery no solar.



Case study 1: battery with a solar system



Topics covered by this presentation

- Introduction to the main applications for stationary batteries for wineries and discuss their benefits.
- Discuss the difference between peak shaving and load shifting.
- Show that peak shaving has the largest benefit.





THANK YOU



Contacts:

The Solar Project
National Project Office
20 Dewar Avenue
Ridgehaven
SA 5097

David Buetefuer

Director of Sales and Business Development

T 1 300 778 561

M 0426 830 607

E david@thesolarproject.com.au

